

- NOTES:**
1. ALL WORK AND MATERIALS TO BE IN ACCORDANCE WITH THE LATEST REVISION OF THE CITY OF WINNIPEG STANDARD CONSTRUCTION SPECIFICATIONS.
 2. CONTRACTOR TO CONFIRM THE LOCATION OF ALL UTILITIES/SERVICES IN THE FIELD PRIOR TO CONSTRUCTION.
 3. ALL ROADWAY DIMENSIONS SHOWN ARE TO BACK OF CURB.
 4. ADD 200.00 TO ABBREVIATED ELEVATIONS TO OBTAIN GEODETIC ELEVATION.
 5. PAVEMENT REPAIRS SHOWN ARE ONLY A REPRESENTATIVE APPROXIMATION OF THE TENDERED QUANTITIES.
 6. RENEW CURB AND SIDEWALK AS IDENTIFIED BY CONTRACT ADMINISTRATOR.
 7. ALL PRIVATE WALKWAYS TO BE ADJUSTED TO NEW SIDEWALK OR TOP OF CURB ELEVATION, AS REQUIRED.
 8. MODIFIED BARRIER CURB TO BE CONSTRUCTED AT ALL INTERSECTION RADII AND BACK LANE RADII
 9. CONTRACTORS TO TAKE PRECAUTIONARY STEPS TO PROTECT EXISTING TREES WITHIN THE LIMITS OF CONSTRUCTION FROM DAMAGE FROM CONSTRUCTION ACTIVITIES AS OUTLINED IN THE SPECIFICATIONS.
 10. LAMP STANDARDS, HYDRO POLES, AND ANCHORS THAT REQUIRE TEMPORARY SUPPORT, REMOVAL OR REPLACEMENT, TO BE DONE SO AT THE EXPENSE OF THE CONTRACTOR AS NECESSARY.
 11. ALL BOULEVARDS TO BE SODDED UNLESS OTHERWISE NOTED.
 12. TRAFFIC SERVICES TO PAINT TRAFFIC LINES AND BICYCLE LANE MARKINGS (IF REQ'D).
 13. CONTRACTOR TO CONFIRM LOCATION AND LIMITS OF SEWER REPAIRS BY PERFORMING VIDEO INSPECTION AND REVIEWING WITH CONTRACT ADMINISTRATOR PRIOR TO CONSTRUCTION (IF REQ'D).
 14. ADJUST ALL WATER VALVES, HYDRANTS, MANHOLES, AND CATCH BASINS IN WORK AREA TO GRADE.

EXISTING	LEGEND-PLAN	PROPOSED	EXISTING	LEGEND-PLAN	PROPOSED	EXISTING	LEGEND-PROFILE	PROPOSED
---	WATER MAIN	---	---	IRON BAR	---	---	---	---
---	LAND DRAINAGE SEWER	---	---	HYDRO POLE & LIGHT STANDARD	---	---	---	---
---	WASTE WATER SEWER	---	---	LIGHT STANDARD OR TRAFFIC SIGNAL	---	---	---	---
---	HYDRO	---	---	HYDRO POLE	---	---	---	---
---	M.T.S.	---	---	CURB RAMP	---	---	---	---
---	GAS	---	---	DETECTABLE WARNING SURFACE TILE	---	---	---	---
---	SIGNALS	---	---	EDGE OF SIDEWALK	---	---	---	---
○	MANHOLE	○	---	FENCE	---	---	---	---
□	CATCH BASIN	□	---	PROPERTY LINE	---	---	---	---
△	CURB INLET	△	---	EDGE OF ASPHALT	---	---	---	---
△ □ ○	UTILITIES ADJUSTED	△ □ ○	---	EDGE OF CONCRETE	---	---	---	---
┘	PLUG	┘	---	MODIFIED BARRIER CURB	---	---	---	---
◇	HYDRANT	◇	---	BARRIER CURB	---	---	---	---
⊗	VALVE	⊗	---	BARRIER CURB AND GUTTER	---	---	---	---
┘	CURB STOP	┘	---	CONC SIDEWALK	---	---	---	---
230.99	GROUND GRADE	(31.000)	---	CONCRETE SLAB	---	---	---	---
(31.000)	PAVEMENT GRADE	(31.000)	---	ASPHALT	---	---	---	---
→	ANCHOR	→	---	MILLED SURFACE	---	---	---	---
#111	CIVIC ADDRESS	---	---	ASPHALT JOINT REPAIR	---	---	---	---
---	EXISTING	---	---	---	---	---	---	---

LOCATIONS APPROVED UNDERGROUND STRUCTURES

SIGNED BY: _____ DATE: _____

SUPV UG STRUCTURES: _____ DATE: _____

LOCATION OF UNDERGROUND STRUCTURES AS SHOWN ARE BASED ON THE BEST INFORMATION AVAILABLE BUT NO GUARANTEE IS GIVEN THAT ALL EXISTING UTILITIES ARE SHOWN OR THAT THE GIVEN LOCATIONS ARE EXACT CONFIRMATION OF EXISTENCE AND EXACT LOCATION OF ALL SERVICES MUST BE OBTAINED FROM THE INDIVIDUAL UTILITIES BEFORE PROCEEDING

WSP Canada Group Limited
Suite 111 - 93 Lombard Ave
Winnipeg, MB R3B 3B1
T. 204.943.3178
F. 204.943.4948
www.wsp.com

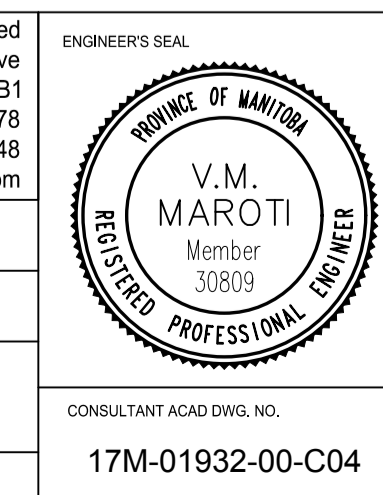
DESIGNED BY: JP
CHECKED BY: TP

DRAWN BY: SB
APPROVED BY: VM

ISSUED FOR TENDER: 2018-09-29 DS
ISSUED FOR UGS REVIEW: 2018-04-25 DS
ISSUE FOR CLIENT REVIEW: 2017-02-09 JP

HOR. SCALE: 1:250
VERTICAL: 1:25

NO. REVISIONS: _____
DATE: 2018-01-06
BY: _____



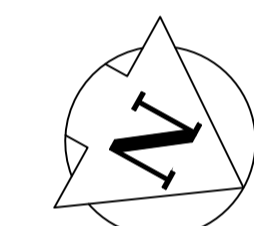
THE CITY OF WINNIPEG
PUBLIC WORKS DEPARTMENT
ENGINEERING SERVICES DIVISION

2018/2019 INDUSTRIAL STREETS RENEWAL PROGRAM
HENLOW BAY - FULTZ BLVD TO SCURFIELD BLVD
PAVEMENT RECONSTRUCTION
STA. 5+65 TO STA. 7+25

Winnipeg

CITY DRAWING NUMBER: _____
SHEET 04 OF 12
BID NO. 85-2018

CONSULTANT ACAD DWG. NO. 17M-01932-00-C04



MATCHLINE STA. 7+25, SEE DWG C-05

METRIC
WHOLE NUMBERS INDICATE MILLIMETRES
DECIMALIZED NUMBERS INDICATE METRES

ENGINEERS GEOSCIENTIST MANITOBA
Certificate of Authorization
WSP Canada Group Limited
No. 6657